

Selection Status (including Module Substitution)

What Selection Status is and how to check and amend it

COPYRIGHT

The University of Bradford retains copyright for this material, which may not be reproduced without prior written permission

SAINT screen shot(s) reprinted by permission from Tribal Technology Limited

Business Objects screen shot(s) reprinted by permission from Business Objects UK

Microsoft [Excel] screen shot(s) reprinted by permission from Microsoft Corporation. Microsoft is a registered trademark and Windows is a trademark of Microsoft Corporation

The SAINT team welcomes feedback on its documentation. Please email any comments on the content of this document to saint@bradford.ac.uk

For other SAINT documentation please see:
<http://www.brad.ac.uk/admin/SAINT/traindocs.php>

CONTENTS

1. What is selection status?	4
2. Setting selection status when adding a module.....	4
2.1 Via DMD.....	4
2.2 Via RSM.....	5
2.3 Via XSM	6
2.4 Via MAV	6
3. Checking and amending selection status	7
4. APEL and selection status	8
5. Substituted and Withdrawn modules and selection status.....	8

1. What is selection status?

Selection status is a means of ensuring that the credits for a particular module are counted towards the correct block of a student's degree.

So, for example, if a student is taking a level 2 module as part of block 3 of their programme, the selection status of that particular module would need to be 3C (for a core module) or 3O (for an optional module). Equally, if a student is taking a level 3 module as part of block 2 of their programme, the selection status of the module would need to be 2C or 2O, depending on whether the module is core or optional.

2. Setting selection status when adding a module

This section assumes that users are familiar with the following screens used for attaching modules to students. If you are unfamiliar with these screens or would like further advice, please contact the SAINT Team.

2.1 Via DMD

When creating or modifying a diet via DMD, the appropriate selection status should be attached to modules. Clicking on the 'Module Diets' button (figure 2.1a) shows the diet elements (modules) and allows you to attach the required selection status to those modules in the 'Sts' column (figure 2.1b).

Figure 2.1a – the DMD screen – click the 'Module Diets' buttons to view the modules on the diet

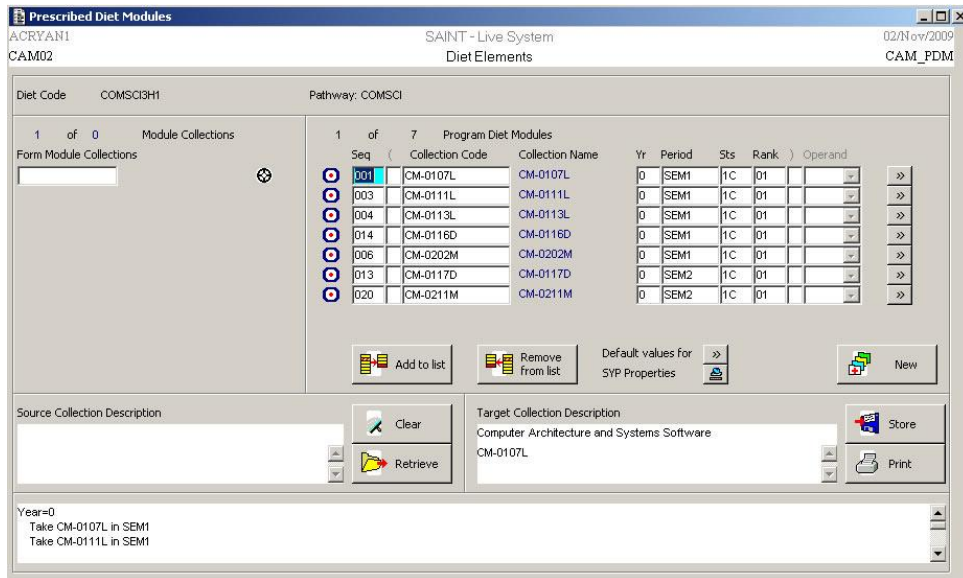


Figure 2.1b – The diet elements (modules). Selection status is shown in the Sts column

In the example above, the status for these modules is 1C (block 1 compulsory). Alternatively it could be 1O (block 1 optional).

2.2 Via RSM

When using RSM to add a module, the Selection Status is chosen from the drop-down box titled 'Selection Status' (figure 2.2a).

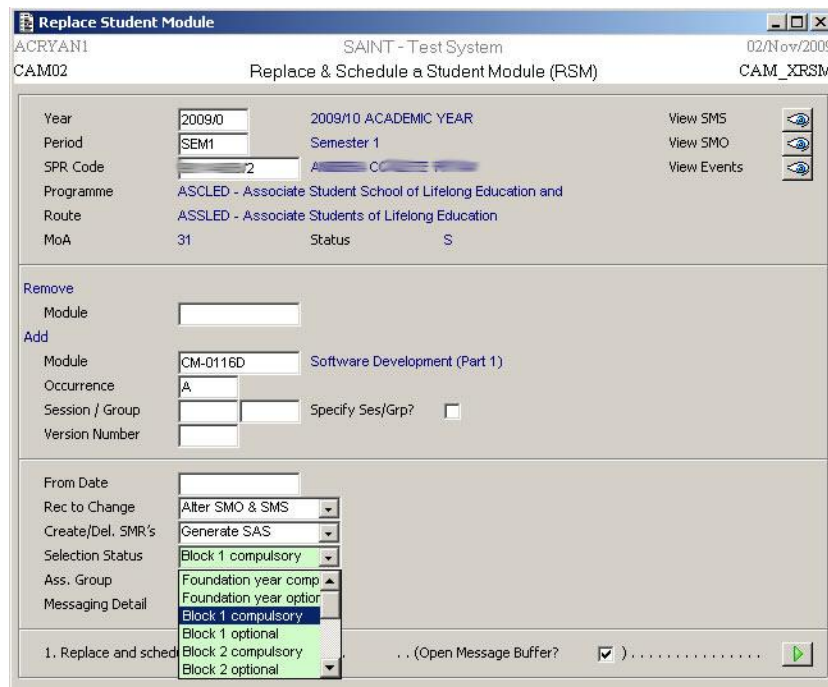


Figure 2.2a – how to choose selection status when adding a module through RSM

2.3 Via XSM

When adding module to students using XSM, Selection Status is chosen from the drop-down box 'Selection Status' (figure 2.3a).

Figure 2.3a – how to choose selection status when adding a module through XSM

2.4 Via MAV

In this case Selection Status is entered in the box 'Sel Stat' (figure 2.4a).

Student	Int	Surname	Prog	Route	MOA	Batch	Credits	Scheme	Lev	Sel Stat	E1	E2	Ag
080			UBAAR	BAARCH	01	HONS	20.00	BUS	1	1C			
080			UBSAR	ARCSCI	23	HONS	20.00	BUS	1	1C			
070			UBSAR	ARCHAE	01	HONS	20.00	BUS	1	1C			
080			UBAAR	BAARCH	01	HONS	20.00	BUS	1	1C			
080			UBSAR	ARCHAE	23	HONS	20.00	BUS	1	1C			
080			UBSAR	ARCSCI	23	HONS	20.00	BUS	1	1C			
080			UBAAR	BAARCH	01	HONS	20.00	BUS	1	1C			
080			UBSAR	ARCSCI	23	HONS	20.00	BUS	1	1C			
080			UBSAR	ARCHAE	23	HONS	20.00	BUS	1	1C			
070			UBSAR	ARCSCI	23	HONS	20.00	BUS	1	1C			
080			UBSAR	ARCHAE	01	HONS	20.00	BUS	1	1C			
080			UBAAR	BAARCH	01	HONS	20.00	BUS	1	1C			
080			UBAAR	BAARCH	01	HONS	20.00	BUS	1	1C			
080			UBAAR	BAARCH	01	HONS	20.00	BUS	1	1C			
080			UBSAR	ARCSCI	23	HONS	20.00	BUS	1	1C			
070			UBAAR	BAARCH	01	HONS	20.00	BUS	1	1C			
070			UBAAR	BAARCH	01	HONS	20.00	BUS	1	1C			
080			UBSAR	ARCHAE	23	HONS	20.00	BUS	1	1C			
080			UBAAR	BAARCH	01	HONS	20.00	BUS	1	1C			

Figure 2.4a – Selection status when using MAV

3. Checking and amending selection status

Incorrect selection status is the cause of the majority of 'check credit' errors when running CSP (figure 3a).

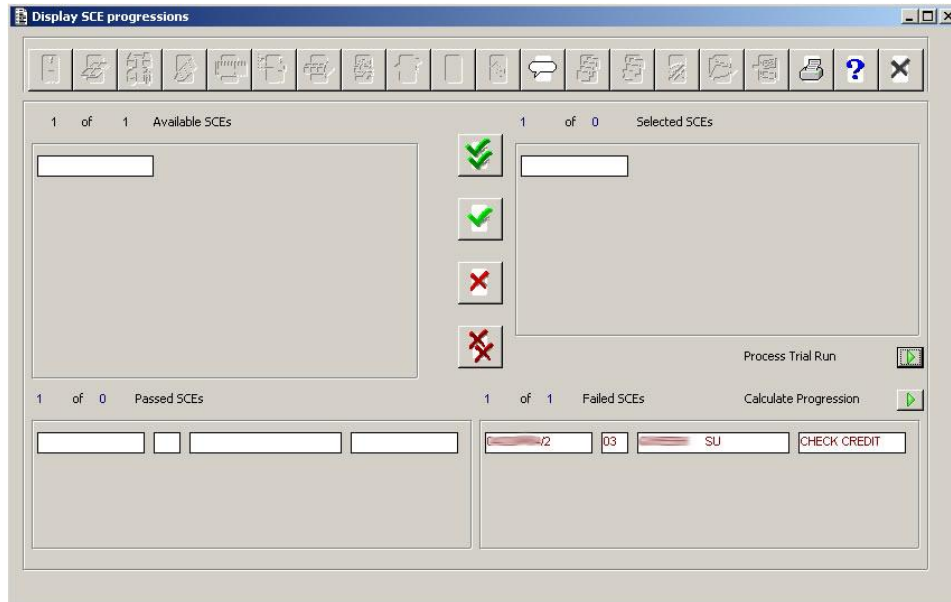


Figure 3a – check credit error when running CSP

If you get the check credit error when running CSP, use the SMRS screen (figure 3b) to check that each of a student's modules has the correct selection status.

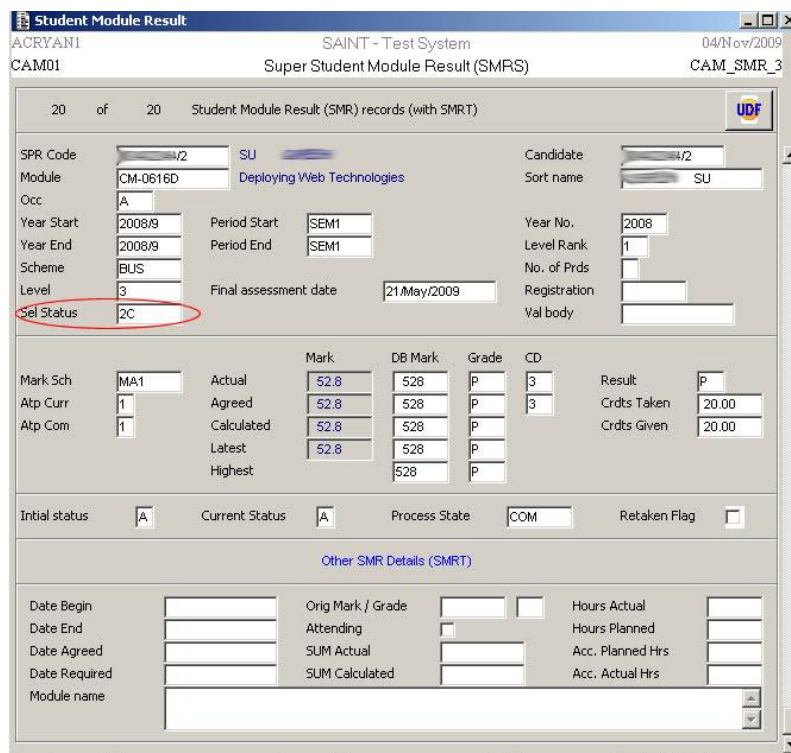


Figure 3b – the location of selection status on the SMRS screen

In the example shown above, the selection status of the module is 2C but should be 3C. Correct this by clearing the box and entering the correct selection status. CSP can then be re-run.

4. APEL and selection status

This section assumes that users are familiar with the following screen used for crediting APEL. If you are unfamiliar with this screen please see the APEL documentation on the SAINT website, or contact the SAINT Team for further advice.

When using SMC to APEL credits/modules, ensure that the selection status is correct. This is shown in figure 4, below.

1 of 1 Module credit (SMC) records		UDF	
SPR code	ND-5000S	Created date	18/Jun/2009
Module	ND-5000S	Updated date	18/Jun/2009
Sequence	1	Updated by user	PCROSIER
Academic year	2008/9	Agreed hours	
Period	SEM1	Approved date	
Module type	STAN	Approved by user	
Scheme	BUS	Credits / Taken	120.00
Level	2	Mark / Formatted	596 59.6
Mark scheme	MA1	Grade	P
Selection Status	2C		
School code			
Institution code			
Reason for APL		Count in process?	<input checked="" type="checkbox"/>
Module title	AP(E)L module - Undergraduate 1		
Reason	Direct entry to year 3. Already completed Stages 1&2 at another institution		
BA Dept of Social Sciences and Humanities - BA Creative Writing			

Figure 4 – Selection status when using SMC to APEL credits/modules

5. Substituted and Withdrawn modules and selection status

Where a module has been substituted – for example, if a student is retaking the year with attendance but a particular module is no longer offered – it is possible to exclude the original module from any progression and award calculations, and include the substituted module in its place.

Where a module has been withdrawn – for example, if a student has moved onto an Ordinary route and is not taking a re-sit – it is possible to exclude the original module from any progression and award calculations.

To do this, use the SMRS screen. Ensure that:

1. the module you **do** want to include in the progression & award calculations has the correct selection status (see section 3)
2. the module you **do not** want to include in the progression & award calculations has a selection status of S (figure 5)

The screenshot shows the 'Student Module Result' window for user ACRYAN1 in the SAINT - Test System. The window title is 'Super Student Module Result (SMRS)'. The current record is 1 of 20. The module is CM-0107L, 'Computer Architecture and Systems Software'. The selection status 'Sel Status' is set to 'S' and is highlighted with a green background and a red circle. Other fields include SPR Code, Candidate, Year Start/End, Period Start/End, Scheme, Level, and various assessment marks and grades.

Mark Sch	Actual	Mark	DB Mark	Grade	CD	Result
MA1	65.4	65.4	654	P	5	P
Atp Curr	Agreed	65.4	654	P	5	Crdts Taken
Atp Com	Calculated	65.4	654			20.00
	Latest					Crdts Given
	Highest		654	P		20.00

Figure 5 – excluding a module from the progression & award calculations by using S as the selection status