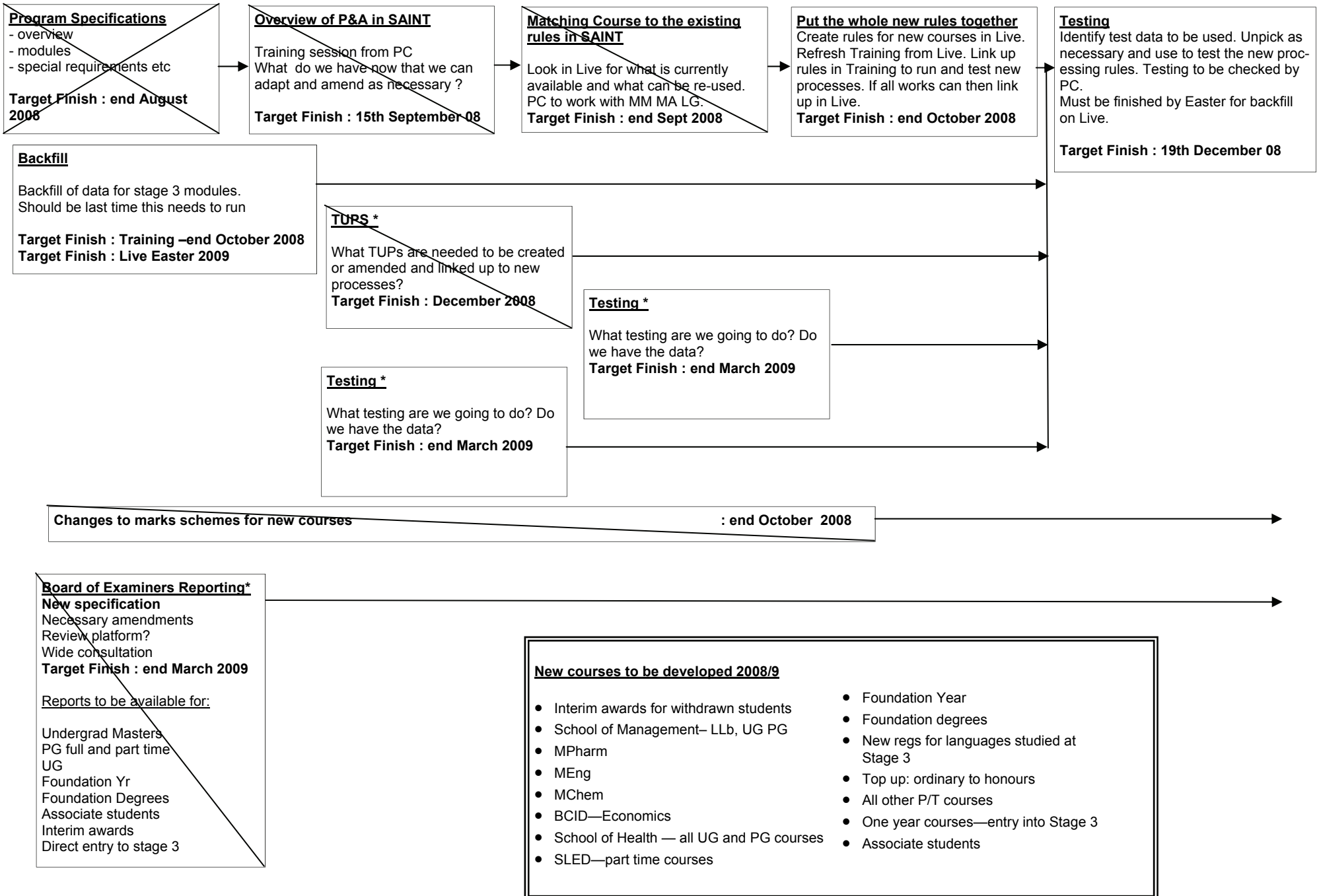


Progression and Award developments 2008/9



Changes to marks schemes for Stage 2 modules * — removal of 25% compensation rule Target Finish : end August 2008

Set up rules for Stage 2 students * — with and without 25% compensation rule Target Finish : end September 2008

Spanning modules for post graduate dissertation modules — to be created / amended / added to diets + training given Target Finish : end August 2008

Implement bespoke development 1 * — updates SMR UDEs with UDEs from previous attempt(s) Target Finish : end August 2008

**Implement bespoke development 2 * — updated BRAD report that can show up to xx components
Target Start : January 2009 Target Finish : end March 2009**

**Pass lists * — Necessary amendments for MEng and MPharm
Target Finish : end April 2009**

Automation * — Necessary amendments

We want SCE and SPI to match. What do SAS and depts. Want?

Target Start : start January 2009 Target Finish : end March 2009

E:Vision * — Necessary amendments Target Finish : end April 2009